

THE EXECUTIVES IN WORKERS' COMP AND RISK CONFERENCE 2025

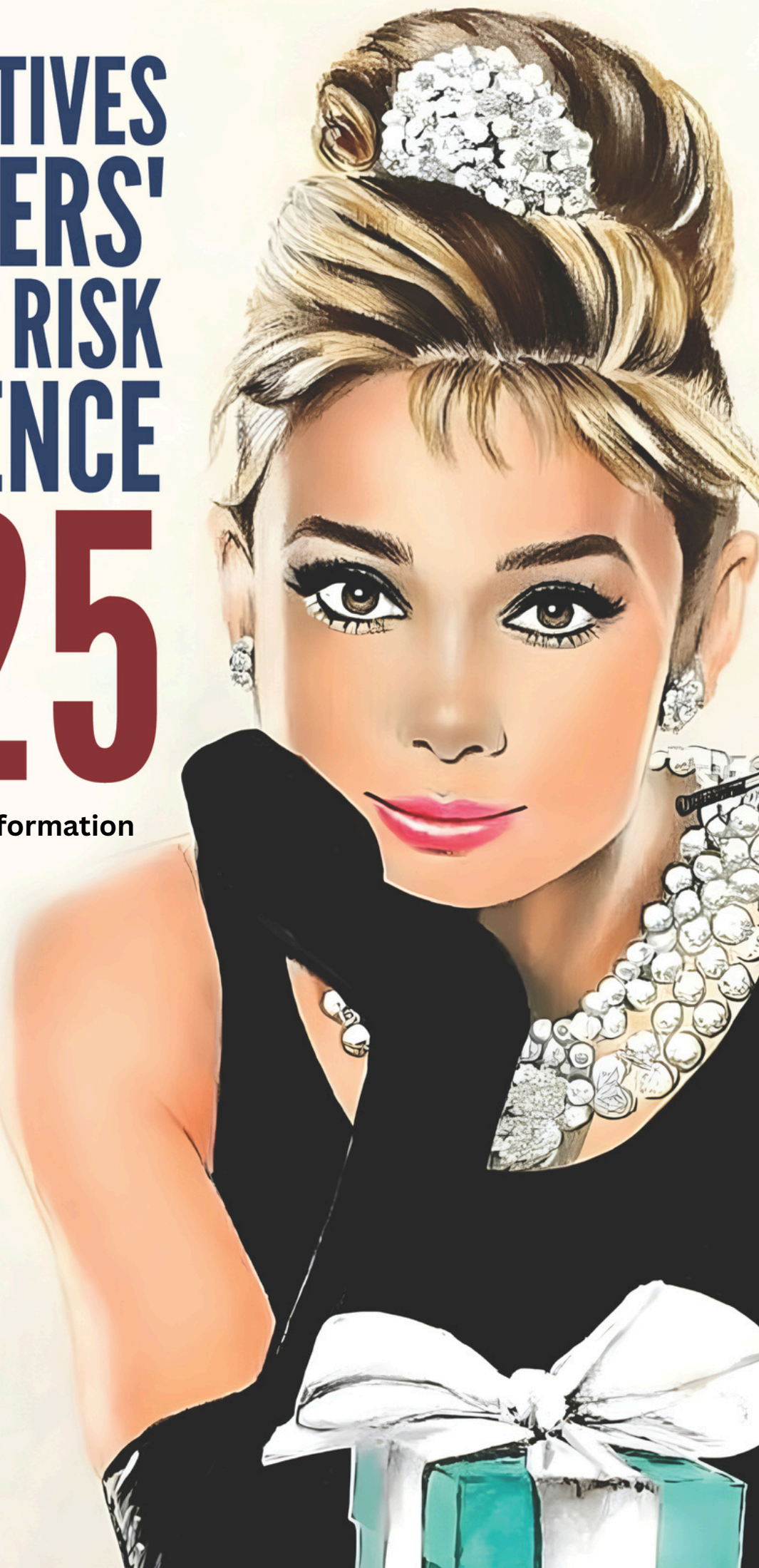
Sessions and Speakers Information

**PRE-CNFERENCE
ALLIANCE OF
WOMEN
FEBRUARY 10**

**CONFERENCE &
EXPO FEBRUARY 11**

**EWC&R
CONFERENCE**

THE EXECUTIVES IN WORKERS' COMP AND RISK
THE BEST CONFERENCE OF THE YEAR!



TIME: 9:00 AM
ROOM: MACRO-PRO

Joe Carresi, Senior Advisor,
WC & Disability Management,
Southern California Edison

Mike Callan, Owner, Republic
Document Management

Stephen Schneider
CEO, DocuCents

Diann Cohen, VP of Client
Education and Services,
Macro-Pro

Navigating Copy Service Complexities: A Collaborative Dialogue With Key Stakeholders

In this session, we will not table this topic but rather play it out entirely with all sides, including the applicant copy services, the defense copy services, and the payers/employers, sharing their understanding of the rules (fee schedule). Obviously, both sides understand it very differently, but why? We'll find out why applicants copy services bill for "duplicate" copies, send multiple subpoenas to one location, and subpoena records even when the defense has offered to supply a copy. These and other issues will be covered, including what the employers/payers' are doing to combat these issues. Are they right?

Our goal is to foster understanding and identify areas for improvement, with the ultimate aim of reducing friction and litigation costs in workers' compensation cases.

TIME: 9:00 AM
ROOM: MEDEX

Leah Cooper
Global Chief Digital Officer
Sedgwick

Jeffery Williams
Director, Digital Insurance
Leader
Microsoft

Technology Advancements: How AI and Innovation Are Transforming Workers' Compensation

Artificial intelligence and tech innovations are reshaping the workers' compensation landscape, redefining the roles of adjusters and enhancing the experience for injured workers. This session, led by industry experts, dives into the expanding use of AI in claims management and explores how employers can harness these tools to boost program efficiency and outcomes. Learn about the opportunities and risks involved in integrating these technologies, and discover actionable strategies to future-proof your organization's workers' compensation processes.

TIME: 9:00 AM
ROOM: THE ROSSI GROUP

Steve Simon
Senior Risk Control Manager,
Safety National

John Kovacs
Owner, Floor Safety
Movement

Transforming Workplace Safety: The Science of Slip, Trip, and Fall Prevention

Slips, trips, and falls are among the leading causes of workplace injuries, costing businesses approximately \$70 billion annually. While many companies have safety programs in place, few leverage the cutting-edge strategies and science of tribology—the study of friction, wear, and lubrication—to prevent these incidents. In this session, we'll dive into slip meter testing, explore the most effective prevention strategies, and discuss the costly consequences of liability claims. Join us to strengthen your safety plan and formalize an actionable slip, trip, and fall prevention checklist that reduces risk and enhances workplace safety.

10:00-10:45 AM
SOLUTION ROOM

GET YOUR SCAVENGER HUNT CARDS STAMPED FOR THE GRAND PRIZE RAFFLE
DROP CARDS OFF AT THE SORIANO LAW GROUP BOOTH



LAW OFFICES OF
STACEY L. TOKUNAGA

Purchase your ticket at www.ewccconference.com
Group discount code available at info@ewcevents.com
Includes 5 CEUs, breakfast, lunch, and Cocktail Hour

TIME: 10:45 AM

ROOM: STACEY L TOKUNAGA



Mark Walls, Client
Engagement, Safety National

Kimberly George, Global Chief
Brand Officer, Sedgwick

Tatiana Gales, National
Director Workers
Compensation, Prospect
Medical Holdings, Inc.

Shaun Jackson, Executive
Director-Risk Management,
Panda Restaurant Group

Treesie Richins,
Assistant Manager Workers
Compensation, Discount Tire

Navigating the Evolving Landscape of Risk Management



Kimberly George
Global Chief Brand Officer
Sedgwick

Mark Walls
Client Engagement, Safety
National

The world of workers' compensation and risk management is rapidly changing, driven by shifting workforce dynamics, emerging risks, and a constantly evolving insurance market. In this keynote session, Kimberly George of Sedgwick and Mark Walls of Safety National, joined by a panel of industry experts, will explore the most pressing challenges facing risk managers today. Learn how organizations are adapting, the critical role of collaboration between risk management and HR in addressing leave and accommodation issues, and how industry partners can step up to support these changing needs. Don't miss this essential session for forward-thinking strategies to stay ahead.

Announcements

Scavenger Hunt

Win fun prizes during
our Hollywood Trivia!



With your Scavenger Hunt card in hand, look for the icons at the booths and have your card signed off by the Scavenger Hunt Sponsor. Once your card is completed, drop it off at the Soriano Law Group booth (look for the gold balloons) to have a chance to win the grand prize trip and a \$500 visa gift card for meals and more!

Also, remember to talk to the sponsors and exhibitors about your pain points and how they can help you with solutions!

12:00-12:30 PM
SOLUTION ROOM

12:30-1:30 PM Buffet Lunch

**GET YOUR SCAVENGER HUNT CARDS STAMPED FOR THE GRAND PRIZE RAFFLE
DROP CARDS OFF AT THE SORIANO LAW GROUP BOOTH**

Enjoy lunch with us! Must show your hand stamp.

TIME: 1:30 PM
ROOM: MACRO-PRO

Sarah Cato, ARM
Director of Risk & Insurance,
Rubio's Restaurants, Inc.

Jolly Hamid, Manager of
Workers' Compensation &
Disability, University of
Southern California

Omar A. Behnawa, Esq.
Managing Partner-Orange
County Office, Laughlin, Falbo,
Levy & Moresi, LLP

Winning Strategies: Optimal Defense Tactics for Workers' Compensation Claims

Join a dynamic panel of experts—including a claims manager, risk manager, and defense counsel—as they dive into the most effective defense strategies for managing workers' compensation claims and controlling costs. This session will analyze recent case law and provide actionable insights to help you build a strong defense while maintaining financial efficiency.

Key Takeaways:

- Proven tactics to resolve claims favorably within the first 60 days of litigation.
- Strategies to avoid life pension and total permanent disability (100%) claims.
- Innovative methods to close out stagnant or high-exposure claims.

Don't miss this opportunity to learn practical approaches for minimizing risks and maximizing claim outcomes.

TIME: 1:30 PM
ROOM: MEDEX

Denise Sanchez
Managing Attorney
Michael Sullivan & Associates

Serena Neves
Managing Partner
Michael Sullivan & Associates

Legal Blockbusters of 2025: A Must-See Preview for the Workers' Compensation Industry

Lights, camera, legal action! Get ready to step into the legal spotlight as we roll out the red carpet for the latest blockbusters in case law and upcoming legislation set to premiere in 2025. In this session, we'll unpack the key legal shifts that will make waves in the workers' comp and risk industry, ensuring you're prepared for the changes set to take center stage.

With expert insights from our industry "directors," we'll spotlight emerging trends and plot twists that could shape the future of your work. Don't miss this exclusive preview of the legal landscape—it's a must-see for anyone looking to stay ahead in the industry.

TIME: 1:30 PM
ROOM: THE ROSSI GROUP

Max Koonce
Chief Claims Officer, Sedgwick

Pamela Brann
ABCP, BCMM, ARM
Vice President, Risk
Management, Cast & Crew

Building Resiliency: Preparing for Disruption in Today's Risk Environment

In an increasingly complex world, resiliency is essential for navigating operational disruptions and economic turmoil caused by global events, natural disasters, regulatory uncertainty, and rapid technological advancements. Risk exposures can escalate quickly, making it critical for companies to be prepared. In this session, our expert panel will explore how risk managers can develop and implement strategies to recognize, assess, and address these diverse risks efficiently. Learn how to build programs that ensure your organization can bounce back from setbacks, safeguard operations, and remain resilient in the face of uncertainty.

2:30-3:15 PM
SOLUTION ROOM

Enjoy our Breakfast at Tiffany's-themed treats during afternoon break as you stroll through the Solution Room.

Get your Scavenger Hunt cards stamped for the Grand Prize raffle. Drop cards off at Soriano Law Group booth (look for gold balloons).

TIME: 3:15 PM

ROOM: MACRO-PRO

Dr Tyrone Spears
Chief
Workers' Comp Division
City of Los Angeles

Maggie Jaltorossian
Vice President
Intercare Holdings Insurance
Services

Navigating Emerging Trends in Workers' Compensation

True leadership is not about personal accolades but about the positive influence we have on others. This session explores how selflessness and humility can transform leadership, inspiring teams, building trust, and fostering meaningful connections. Learn how prioritizing professional growth over personal gain creates a ripple effect of positive change within your organization. Discover actionable strategies to lead with purpose, empower your team, and cultivate an ethical leadership mindset that thrives in today's dynamic world. Join us to redefine what it means to lead with compassion and impact.

TIME: 3:15 PM

ROOM: MEDEX

Tanya Parker
Assistant Vice President,
Client Engagement, Safety
National

Maximizing Impact: Best Practices for Effective Claims Review Meetings

Organizing claims review meetings can be challenging, with numerous stakeholders and a range of claims to prioritize. Yet, these meetings are essential for identifying high-cost claims, streamlining processes, assessing risks proactively, and expediting resolutions. To achieve these outcomes, collaboration between claims adjusters, employers, carriers, and legal counsel is key. In this session, we'll explore proven strategies for conducting efficient and productive claims review meetings, offering actionable insights to help you improve communication, focus on the most pressing claims, and drive better results for your organization.

TIME: 3:15 PM

ROOM: THE ROSSI GROUP

Mark Popolizio, J.D.
VP MSP Compliance,
Verisk Casualty Solutions

Behind the Scenes: Preparing for the WCMSA Reporting Script Change in 2025

Significant changes are on the horizon for Workers' Compensation Medicare Set-Asides (WCMSAs). Starting April 4, 2025, CMS will require insurers to report several WCMSA data points for all settlements involving Medicare beneficiaries under Section 111 TPOC reporting. This includes WCMSAs submitted and approved by CMS, non-submit WCMSAs, EBMSAs, and even those below the threshold. Insurers must also report when no WCMSA is included in the settlement.

This new reporting process is crucial as it grants CMS unprecedented oversight of how WCMSAs are utilized, with the authority to enforce compliance through measures like the False Claims Act. In this session, we'll break down the implications of these changes and outline actionable steps insurers can take to prepare.

4:15 - 4:30 PM
SOLUTION ROOM

GET YOUR SCAVENGER HUNT CARDS STAMPED FOR THE GRAND PRIZE RAFFLE
DROP CARDS OFF AT THE SORIANO LAW GROUP BOOTH



LAW OFFICES OF
STACEY L. TOKUNAGA

Purchase your ticket at www.ewconference.com
Group discount code available at info@ewcevents.com
Includes 5 CEUs, breakfast, lunch, and Cocktail Hour

TIME: 4:30 PM



ROOM: STACEY L TOKUNAGA

Angie Jung, RN, BSN, CRRN, CCM
Co-Founder/Chief Educational
Liaison, ISYS Solutions, Inc.

Meet and greet our therapy
dogs. Learn how they can
play an important role in
your claims.



Grand Prize Winner
Picked

Must be present to win!

5:30-6:30 PM Cocktail Hour

Cocktail Hour Raffles
Must be present to win!

Unveiling the Biopsychosocial Barriers in Workers' Compensation Claims

The Biopsychosocial (BPS) model examines the connection between biological, psychological, and social factors, and how they affect health and human development.

Why are some injured workers so challenging to manage? The answer often lies in biopsychosocial factors, which can significantly impede case progression. Traditionally stigmatized, mental health issues are now gaining recognition at the executive level, highlighting their importance in creating better outcomes and an inclusive workplace culture.

This session will explore:

- Defining behavioral and mental health within workers' compensation.
- Understanding the psychosocial impact of disability.
- Tools for assessing behavioral health risks and psychosocial barriers.

By addressing these aspects proactively, organizations can reduce the risk of long-term disability claims and financial burdens, while fulfilling ethical and legal responsibilities. Join us to rethink our approach and gain new insights.

Announcements

Find out if you are the lucky
winner of the Grand Prize!



Pick up your CEU Certificate
at the Cocktail Hour.



After a day packed with valuable insights and industry expertise, join us for a relaxing and enjoyable Cocktail Hour. Unwind with colleagues—both new and familiar—over a glass of wine or your favorite drink. Savor our delicious appetizers, crafted to feel more like a meal, while you network in a casual, laid-back setting. Don't forget to drop off your business card at the exhibitor booths for a chance to win one of our exciting raffle prizes! Whether you want to connect or simply relax, our Cocktail Hour is the perfect way to wrap up your day.



JOIN US FOR THE



sedgwick

COCKTAIL HOUR!

ENJOY COCKTAILS, TASTY APPETIZERS,
AND EXCITING PRIZES.

You must be present to win!

Plus, don't forget to pick up your CEU certificates.